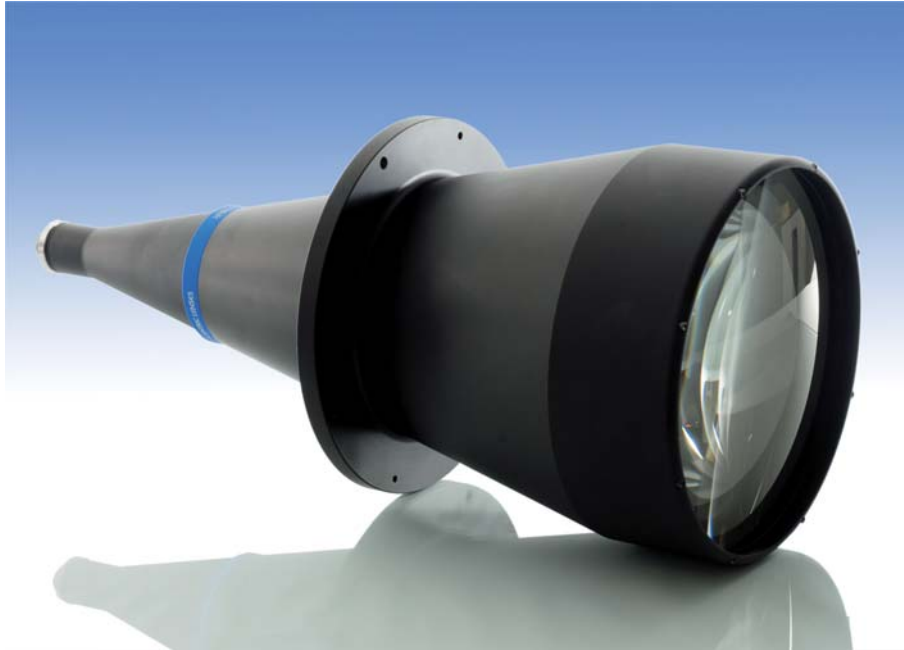




TC 23 240

0,037x Bi-Telecentric lens for detectors up to 2/3"



part number		TC 23 240
Magnification		0,037 +/- 3%
Field Of View		
with 1/4" (3,6 x 2,7) detector	(mm)	98,1 x 73,6
with 1/3" (4,8 x 3,6) detector		130,8 x 98,1
with 1/2" (6,4 x 4,8) detector		174,4 x 130,8
with 1/1.8" (7,13 x 5,37) detector		194,3 x 146,3
with 2/3" (8,8 x 6,6) detector		239,8 x 179,9
Working Distance	(mm)	500,0 +/- 15
Working F-number		8
Telecentricity	(degree)	< 0,08
Distortion	(%)	< 0,08
Field Depth	(mm)	498,0
CTF @70 lp/mm	(%)	> 45
Image side N.A.		0,0620
Object side N.A.		0,0023
Mount		C
Length	(mm)	775,1
External diameter	(mm)	322,0
Weight	(g)	20000

ACCESSORIES AND OPTIONS:



Collimated/Telecentric illumination:

Compatible with LTCL240 illuminator;
green light suggested.

