

TC 4M 09

Bi-Telecentric Lens for Large Detectors up to 1.2" (21.5 mm diagonal)

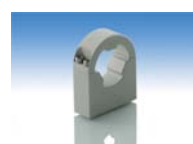


part number	TC 4M 09 (C/F)	
Magnification	2,000 +/- 3%	
Field Of View	(mm)	
with IBIS4-6600		5,3 x 3,9
with KAI2020		5,9 x 4,4
with KAI 2093		7,1 x 4,0
with MI-MV40		8,2 x 6,0
with KAI4011/4021		7,6 x 7,6
Working Distance	(mm)	63,3 +/- 2
Working F-number		22
Telecentricity	(degree)	< 0,1
Distortion	(%)	< 0,1
Field Depth	(mm)	0,3
CTF @ 50 lp/mm	(%)	> 30
Image side N.A.		0,0225
Object side N.A.		0,0450
Mount		C or F
Length	(mm)	170,0
External diameter	(mm)	28,0
Weight	(g)	520

ACCESSORIES AND OPTIONS:



Collimated/Telecentric illumination:
Compatible with LTCL23 illuminator;
green light suggested.



Clamping Mechanics:
Compatible with CMH023.

