



TC UV 23 80

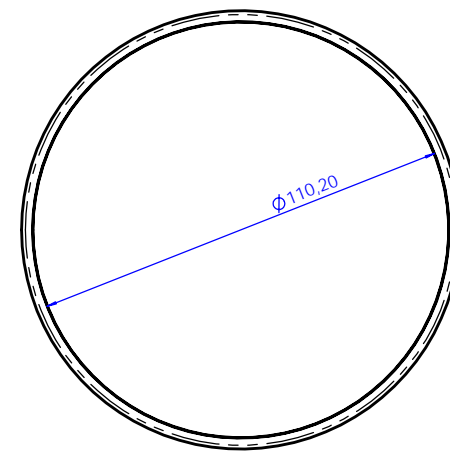
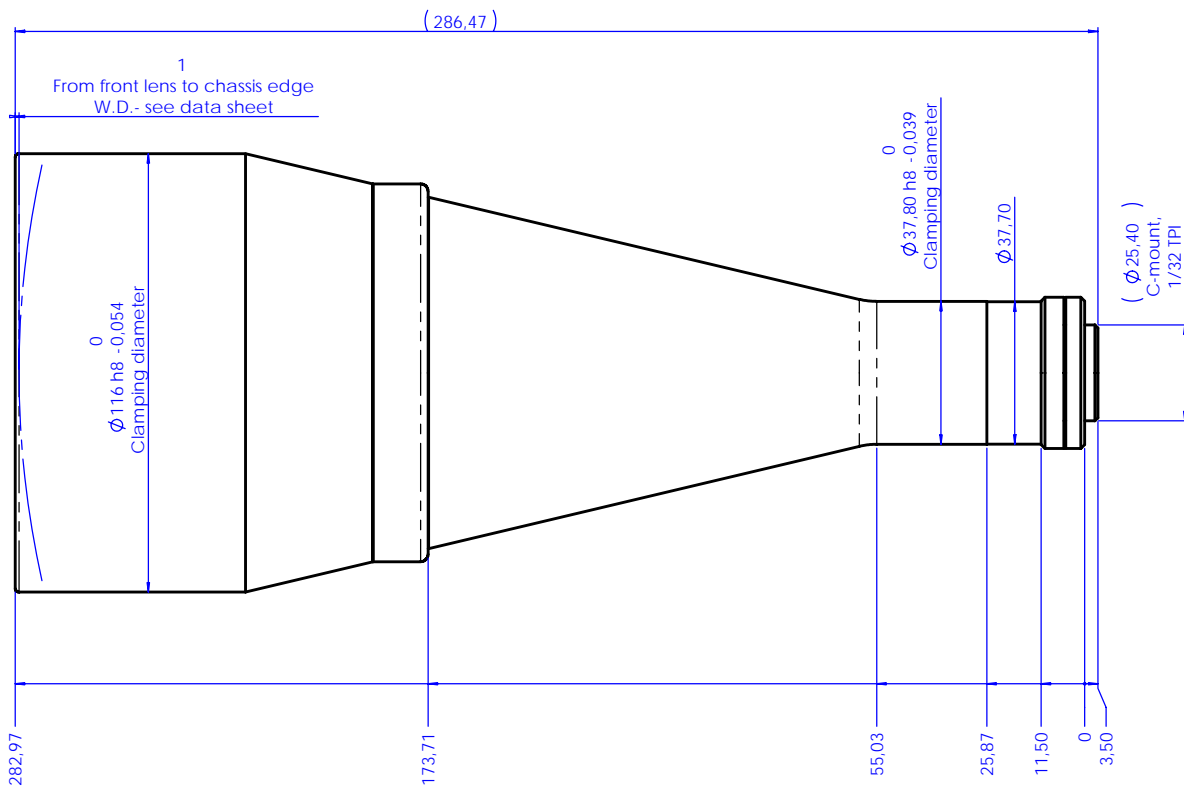
UV Bi-Telecentric Lens for detectors up to 2/3"



part number	TC UV 23 80	
Range	(nm)	365 / 420
Magnification		0,110 +/- 3%
Object Field	(mm x mm)	
with 1/4" (3,6 x 2,7) detector		32,6 x 24,4
with 1/3" (4,8 x 3,6) detector		43,5 x 32,6
with 1/2" (6,4 x 4,8) detector		58,0 x 43,5
with 1/1.8" (7,13 x 5,37) detector		64,5 x 48,6
with 2/3" (8,8 x 6,6) detector		79,7 x 59,8
Working Distance	(mm)	221,0 +/- 7
Working F-number		8
Telecentricity	(degree)	< 0,08
Distortion	(%)	< 0,08
Field Depth	(mm)	54,0
CTF @70 lp/mm	(%)	> 40
Image side N.A.		0,0620
Object side N.A.		0,0068
Mount		C
Length	(mm)	160,4
External diameter	(mm)	116,0
Weight	(g)	1600

Possible vignetting at the image corners with 1/1.8" detectors

Rev No.	Description	Date	Name
A	First light	09/05/08	A.Vismara



Material	N.A.	Mass	1.6 kg	Scale	1:1
Surface treatment	N.A.	Project-Prod.Item/Instrument		Telecentric lens UV 23 80	
Geometrical tolerance (ISO 2768-2)		Class	K	Undimensioned Bevels	1x45°
Linear tolerance (ISO 2768-2)		Class	m	Undimensioned Radii	R 0.5
0.5	>3-	>6-	>30-	>120	>400-
-3	6	30	120	400	1000
±0.1	±0.1	±0.2	±0.3	±0.5	±0.8
		Class	m	±2	±1.2
www.opto-engineering.com		Date	Name		
Designed		09/05/08	A.Vismara		
Draw		09/05/08	A.Vismara		
Checked		x	C.Sedazzari		
Drawing No.		02625-0-A		Sheet 1/1	
Reproduction forbidden without specific authorization					